

THIS DRAWING IS UNPUBLISHED. RELEASED FOR PUBLICATION  
 © COPYRIGHT BY TYCO ELECTRONICS CORPORATION. ALL INTERNATIONAL RIGHTS RESERVED.

LOC FT DIST 0

REVISIONS		DESCRIPTION	DATE	DWN	APVD
P	LTR				
	B	REVISED PER ECO-08-029128	22NOV08	HMR	MS
	B1	REVISED PER ECO-09-020689	27AUG09	KK	AEG

#5-20 SELF TAPPING SCREW  
QTY=2

$15.75^{+0.00}_{-1.27}$   
 $.620^{+.000}_{-.050}$

△2 CABLE CLAMP INSERT

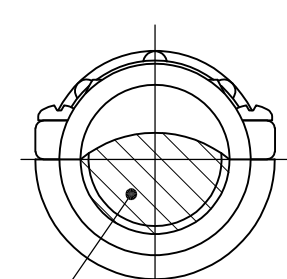
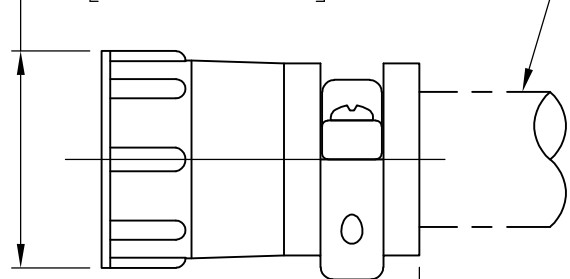
CABLE CLAMP BODY

- △1 CABLE CLAMP BODY AND INSERTS: NYLON, BLACK. SCREWS: CARBON STEEL.
- △2 CABLE CLAMPING AREA ADJUSTABLE FROM 2.54 [.100] TO 10.41 [.410] SQ AREA BY REVERSING OR CHANGING CLAMPING INSERTS.
- △3 17.86 [.703] MAXIMUM CABLE OUTSIDE DIAMETER.
- △4 SCREWS: ZINC W/ TRIVALENT CHROMATE.
- △5 OBSOLETE PARTS: OBSOLETE CIS STREAMLINING PER D.RENAUD/D.SINISI

SCREW FINISH	PACKAGING	PART NUMBER
△4	BULK	213902-4
△4	INDIVIDUAL	213902-3
△4	BULK	213902-2
△4	INDIVIDUAL	213902-1

$28.73 \pm 0.64$   
 $[1.131 \pm .025]$

CABLE SUPPLIED BY CUSTOMER △3



$42.04 \pm 0.76$   
 $[1.655 \pm .030]$

CLAMPING AREA △2

ASSEMBLED VIEW

THIS DRAWING IS A CONTROLLED DOCUMENT.		DWN D.HARDY 07/12/95	Tyco Electronics Corporation Harrisburg, PA 17105-3608	
DIMENSIONS: mm [INCHES]		CHK R.STONE 07/13/95	CABLE CLAMP KIT, LARGE, UNASSEMBLED, SIZE 17, CPC	
TOLERANCES UNLESS OTHERWISE SPECIFIED:		APVD A.FRANTUM 07/13/95	NAME	
0 PLC ± -		PRODUCT SPEC 108-1579	SIZE CAGE CODE DRAWING NO RESTRICTED TO	
1 PLC ± -		APPLICATION SPEC	A3 00779 C-213902	
2 PLC ± -		WEIGHT -	SCALE NTS SHEET 1 OF 1 REV B1	
3 PLC ± -		CUSTOMER DRAWING		
4 PLC ± -				
ANGLES ± -				
FINISH -				
MATERIAL △1				