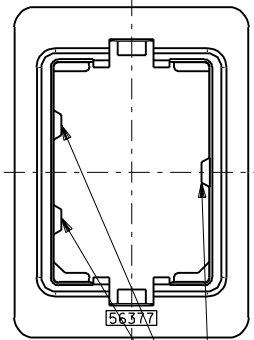
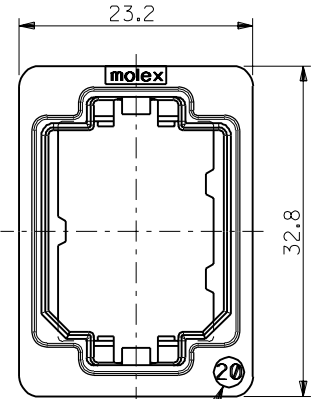
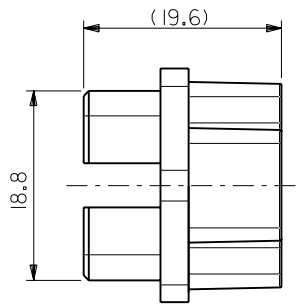
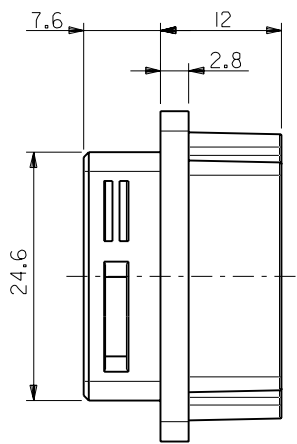


DWG. NO. SD-56377-011



ハウジング挿入方向キー
POLARIZATIONS KEY FOR HOUSING



SIZE IDENTIFICATION

注記
NOTES

- 材質
MATERIAL
亜鉛合金、ニッケルメッキ
ZINC ALLOY, NI PLATING
- 適用ハウジングアッセンブリ: 51233-201* (PIN HS'G ASS'Y)
51238-201* (SOCKET HS'G ASS'Y)
APPLICABLE HOUSING ASS'Y: 51233-201* (PIN HS'G ASS'Y)
51238-201* (SOCKET HS'G ASS'Y)

DO NOT SCALE DRAWING

EC NO. DRWN: CHK: APPR:	EC NO. DRWN: CHK: APPR:	EC NO. DRWN: CHK: APPR:	REVISED 01/10/17 EC NO. J2002-0932 DRWN: S.AKIYAMA CHK: J.MIYAZAWA APPR: Y.O.ITO	RELEASED 01/02/16 EC NO. JD2001-1040 DRWN: S.AKIYAMA CHK: J.MIYAZAWA APPR: H.IKESUGI	MATERIAL 材料 注記参照 SEE NOTES	GENERAL TOLERANCES: (UNLESS SPECIFIED) 一般公差	SCALE 2-1	DESIGN UNITS mm INCH	THIRD ANGLE PROJECTION	TITLE: COMPACT ROBOT CONN. (CRC) RECEPTACLE SHELL
			A	0	FINISH 仕上げ —	10 UNDER 未満	±0.2	<i>S. Akiyama</i> DRAWN BY & DATE 01/01/25	<input type="checkbox"/> mm <input type="checkbox"/> INCH	MATERIAL NO. SEE CHART DRAWING NO. SD-56377-011 SHEET NO. 1 OF 1
					WIRE RANGE 適用線径範囲 —	10 OVER 30 UNDER 以上 未満	±0.25	<i>J. Miyazawa / Y. Ito</i> CHECKED BY & DATE	<input type="checkbox"/> mm <input type="checkbox"/> INCH	
					INS. RANGE 被覆外径 —	30 OVER 以上	±0.3	<i>Y. Ito</i> APPROVED BY & DATE	<input checked="" type="checkbox"/> mm ONLY	
						ANGLE 角度	±3°	<i>Y. Ito</i> CAD FILE NAME 56377011.S01	<input type="checkbox"/> mm ONLY	THIS DRAWING CONTAINS INFORMATION THAT IS PROPRIETARY TO MOLEX INCORPORATED AND SHOULD NOT BE USED WITHOUT WRITTEN PERMISSION.

56377-2002	56377-****
MATERIAL.NO	MODEL.NO

DIMENSIONS:	SHT	REV
<input type="checkbox"/> mm <input type="checkbox"/> INCH	<input checked="" type="checkbox"/> mm ONLY	REVISE ON CAD ONLY